

054309

RECEIVED
LARAMIE COUNTY
CHEYENNE, WY.

'89 FEB 17 AM 10 26

CERTIFIED LAND CORNER RECORDATION

DESCRIPTION OF CORNER EVIDENCE FOUND, AND ORIGINAL RECORD (if known)

S.18 S.17
S.19 S.20
T.17N., R.67W.
6th P.M.

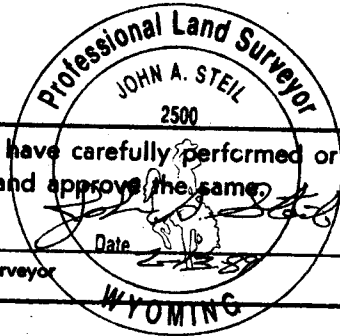
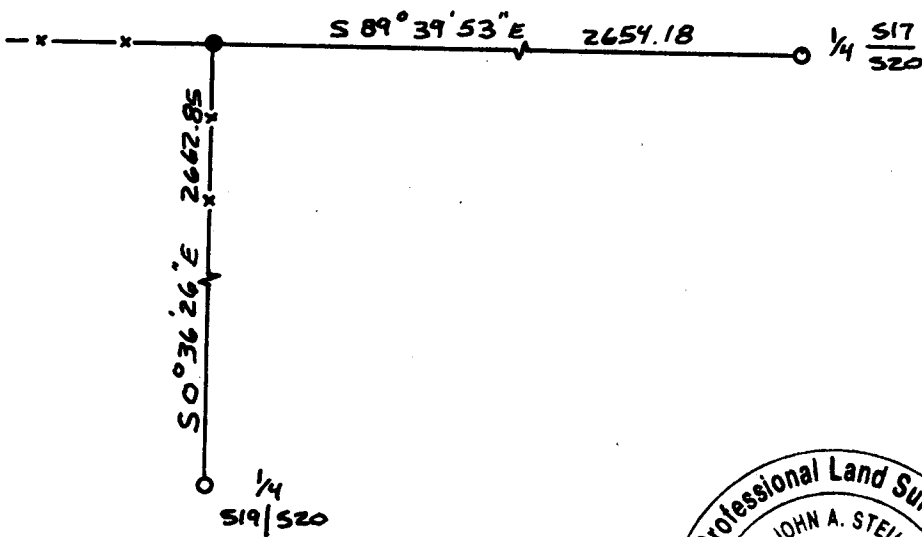
G.L.O. Record: Limestone 18"x18"x4" set by Alfred M. Rogers, October 19, 1872.

DESCRIPTION OF MONUMENT AND ACCESSORIES ESTABLISHED TO PERPETUATE THE ORIGINAL LOCATION OF THIS CORNER:

At the corner: Reset stone with 3"x30" long Aluminum Pipe with 3 1/2" Aluminum Cap at remnants of fence corner West & South. Set original stone along side face up, pipe projecting 0.5' above ground encircled by a collar of stone, cap stamped as shown below.

Accessories : See ties below

SKETCH, WITH COURSE AND DISTANCE TO ADJACENT CORNER IF DETERMINED IN THIS SURVEY. (May Sketch or Paste Reproduction on Reverse Side.)



I, John A. Steel certify that I have carefully performed or reviewed the work done on the diagrammed corner as reported on this recordation form and approve the same.

Signature of Surveyor

Date

L.S. 2500
Registration No.

STATE OF WYOMING,
Office of Clerk and Recorder,
County of _____

This "corner record" was filed for record on the _____ day of _____, 19____, was noted in the cross-index plat and is assigned page No. _____, in book No. _____.

Janet C. Whitehead
County Official

Cross Index No.	N-5	T. 17N	R. 67W	Mer. 6th
_____	_____	_____	_____	Mer.
_____	_____	_____	_____	Mer.
_____	_____	_____	_____	Mer.
_____	_____	_____	_____	Mer.
_____	_____	_____	_____	Mer.
_____	_____	_____	_____	Mer.